

FREEHOLD



House - End Terrace

200 WARRINGTON ROAD, WHISTON, L35 2UA

Asking Price

£140,000

FEATURES

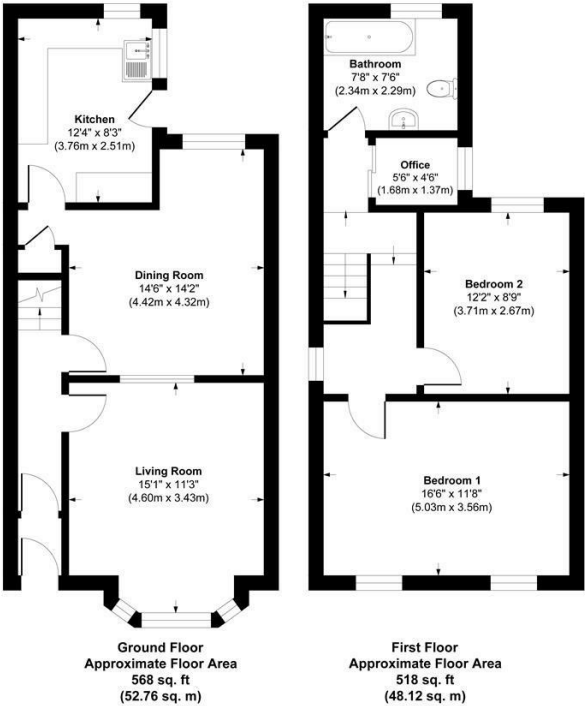
- Two bedroom garden fronted terraced property
- Situated within walking distance to Whiston Hospital
- Close to local shops, schools and transport links
- Entrance hall, lounge and sitting room
- Fitted kitchen with built in appliances
- Family bathroom with a three piece suite
- Ideal Investment
- Gardens to the front and rear
- An early viewing is advised



BROOKS
ESTATE AND LETTING AGENTS LTD

2 Bedroom House - End Terrace located in Whiston

A charming two-bedroom, garden-fronted terraced home, ideally located within walking distance of Whiston Hospital. The property benefits from close proximity to local shops, reputable schools, public transport links, and easy access to major motorways.The spacious accommodation briefly comprises an entrance hall, a comfortable lounge, a separate sitting room, and a fitted kitchen. To the first floor are two well-proportioned bedrooms, a study, and a family bathroom.Externally, the property features a private rear garden along with a small front garden with steps leading to the front door.Early viewing is highly recommended to fully appreciate the space and location on offer. EPC Rating: E

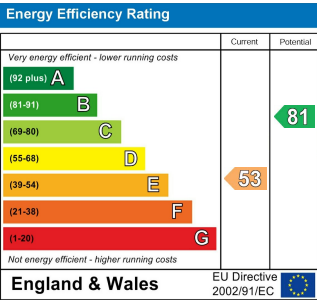


Approx. Gross Internal Area 1086 sq. ft / 100.88 sq. meters

Whilst every attempt has been made to ensure the accuracy of the floorplan shown, all measurements, positioning fixtures fittings and any other data shown are an approximate interpretation for illustrative purposes only and are not to scale. No responsibility is taken for any errors, omission, miss-statement or use of data show.

Call us on
0151 329 3313
prescot@brooksestateandlettings.co.uk
www.brooksestateandlettings.co.uk

Council Tax Band
B



Agents Note: Whilst every care has been taken to prepare these particulars, they are for guidance purposes only. All measurements are approximate and are for general guidance purposes only and whilst every care has been taken to ensure their accuracy, they should not be relied upon and potential buyers are advised to recheck the measurements.

